



make your mark

ALLTEC LC500 Laser Marking System

50 watts in one box

for highest-in-class speeds and
more flexible integration

- **Class leading performance increasing customer throughput** – thanks to highest-in-class speeds
- **Articulated arm and remote head for flexible integration** – especially in tight spaces
- **Single self-contained IP65 rated mobile unit** – for easiest integration in production lines



Thanks to its stainless steel IP65-rated cabinet and the integrated cooling system, *ALLTEC LC500* delivers high performance especially in harsh production environments. That predestines the system for marking all sorts of information (e.g. expiry/ manufacturer's dates, batch/ line numbers, ID matrix/ bar codes, graphics, individual data) at highest speeds on a wide range of materials (e.g. labels, sleeves, PET, glass, foils, rubber, etc.) in industries such as beverage, food and extrusion.

From paper, carton and cardboard packaging to labels and sleeves; from plastic and glass to PET containers; from electrical and electronic components and automobile parts to extrusion products like tubes, profiles and door/ window sealings, **the range of products and materials that can be marked with the ALLTEC LC500 is virtually unlimited.**

Thanks to the mobile cabinet and articulated arm the system quickly and easily fits into your production line and ensures flexible integration in even the most challenging and tight environments, while the compact marking head allows marking in any orientation. **One box – one solution.**

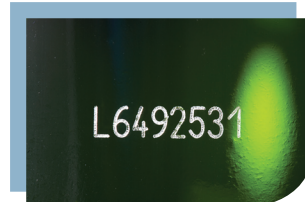
Packaging:
Gable Top



Packaging:
Multi Layer Foil



Food/ Beverage:
Glas Bottle



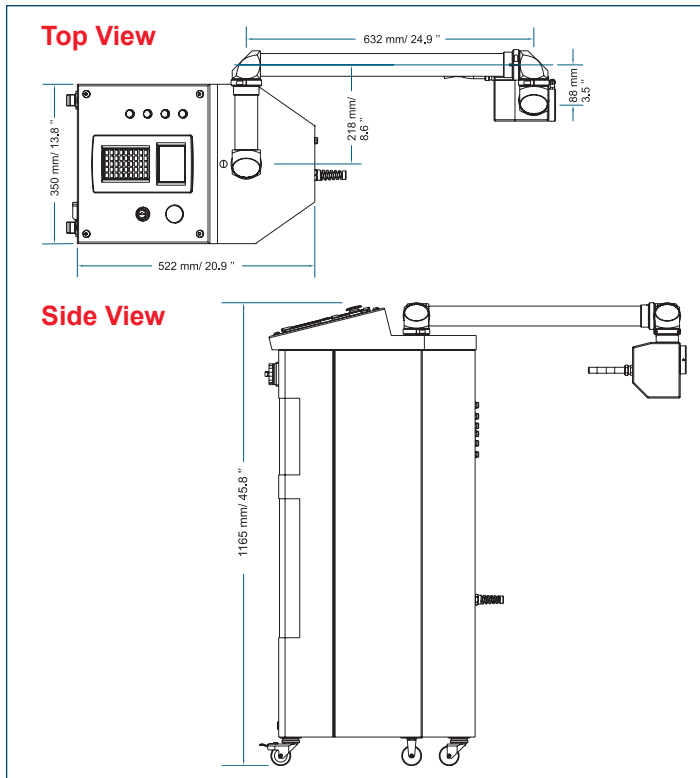
Extrusion:
Plastic (PE) Tube



ALLTEC LC500

Laser Marking System

Dimensions



MARKING FEATURES

Marking Speed

- Up to 2,000 characters per second (depending on the application)

Line Speed

- Up to 15 meters per second (depending on the application)

Marking Field

- *Stationary products:* max. approx. 84.4x87.3 (125 mm lens) or 135x139.6 mm² (200 mm lens), unlimited number of lines
- *Moving products:* max. height approx. 87.3 (125 mm lens) or 139.6 mm (200 mm lens), length does not depend on width of marking field, unlimited number of lines

Marking Formats

- Standard fonts (Windows® TrueType®/ TTF; PostScript®/ PFA, PFB; Open Type®/ OTF)
- Individual fonts, such as high-speed or OCR
- Machine-readable codes: *ID-MATRIX* (ECC100, 140, 200: 10x10 to 144x144 for square formats, 8x18 to 16x48 for non-square formats; ECC plain [free config. ECC code]); *BAR CODES* (BC25/25i/39/39E/128; EAN13/128; UPC_A; RSS14 truncated/ -stacked [CCA/B]/ -stacked omnidirectional/ -limited [CCA/B]/ expanded)
- Graphics/ graphic components, logos, symbols, etc. (DXF, JPG, AI, etc.)
- Linear, circular, angular text marking; rotation, reflection, expansion, compression of marking contents
- Sequence and serial numbering
- Automatic date, layer and time coding, real-time clock
- Online coding of individual data (weight, contents, etc.)

Specifications

LASER

Laser Tube

- Sealed-off CO₂ laser, power class 50 W

Laser Beam Deflection

- Digital high-speed galvanometer scanner

Focusing

- Precision optics: focal lengths 125/ 200 mm (4.92/ 7.87 inches)

INTEGRATED INTERFACE

- Graphic remote control via Ethernet for flexible operation
- Preparation of marking jobs, marking data entry
- System configuration
- Status and alarm display; key switch and e-stop switch
- Excellent legibility of graphic display; fast, intuitive operation

SOFTWARE

Smart Graph

- Graphics-orientated user interface under Windows® 2000/XP for the intuitive and fast preparation of complete marking jobs on PCs
- System configuration
- Text / data / graphics / parameter editor
- Languages: German, English, Chinese, Japanese, Russian, Arabic and many others; freely selectable
- Easy access to standard CAD and graphics programs thanks to import functions for the most important file formats
- WYSIWYG
- Various password-protected security levels

Smart Graph Com

- ActiveX software interface for integration into operation software

Communication

- Ethernet, TCP/IP; optional RS232
- Inputs for encoders and product detector triggers
- 3 inputs / 7 outputs for start / stop signals, machine / operator interlocks, alarm outputs; with additional I/Os extensible
- Customer-specific solutions

Integration

- Direct integration into complex production lines by means of the laser's scripting interface
- Integration via Ethernet (TCP and UDP) and RS232 interface
- Flexible integration options via articulated arm

SUPPLY

Electricity/ Cooling

- 100 - 120 V or 200 - 240 V, 47 - 63 Hz, 1 PH, 1.8 kVA
- Integral closed loop (water to air)

Environment

- Temperature 5 - 40° C (40 - 105° F)
- Humidity 10 - 90 %, non-condensing

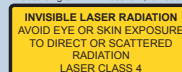
Sealing and Safety Standards

- IP65; LASER CLASS 4

Weight

- approx. 135 kg/ 297 lbs.

according to DIN EN 60825-1:10/2003



© 2007 ALLTEC GmbH – All rights reserved. Because ALLTEC GmbH makes constant efforts to improve its products, the company reserves the right to change the design and specifications without giving advance notification. Windows and OpenType are registered trademarks of Microsoft Corporation. TrueType is a registered trademark of Apple Computer, Inc. PostScript is a registered trademark of Adobe Systems Inc. LC500_E 06.07_2 • Printed in Germany

ALLTEC GmbH

An der Trave 27 - 31 | 23923 Selmsdorf | Germany
Phone 00 49 .(0)388 23.55-0 | Fax 00 49 .(0)388 23.55-222
Email contact@alltec.org | www.alltec.org



make your mark