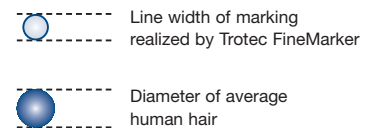
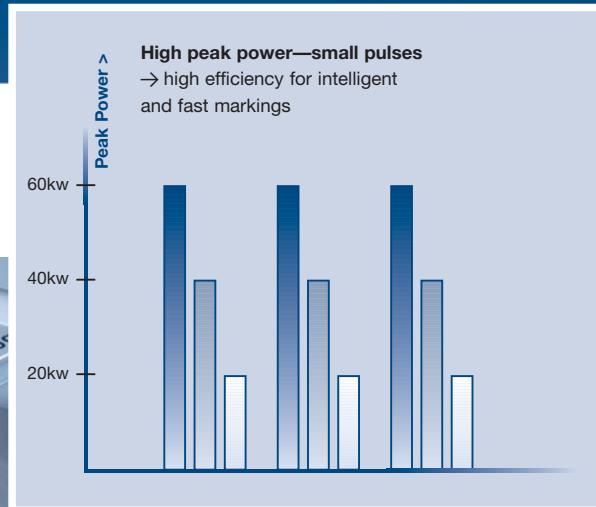
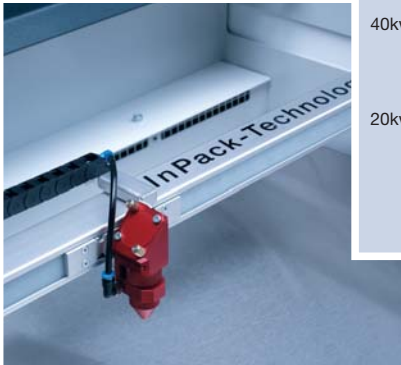


FineMarker: The Technology



- Finemarker Strong
- Finemarker Medium
- Standard YAG

• Dimensions	1130 mm x 980 mm x 1060 mm (44,5 x 38,6 x 41,7 inches)
• Max. working area	720 mm x 430 mm (28,3 x 16,9 inches)
• Max. height of workpiece	Approx. 156 mm (Approx. 6,14 inches)
• Processing speed	FM Strong: 3,5 m/sec (137,8 inches) FM Medium: 2,0 m/sec (78,7 inches)
• Acceleration	5 g
• Mechanical design	Fully enclosed housing with double security system Laser Protection Class 2 (with laser pointer) X-axis drive with maintenance-free, brushless DC servo motor InPack-Technology for maintenance-free operation
• Laser equipment and laser power	<ul style="list-style-type: none"> • FM Medium and FM Strong: Nd:YVO₄ laser (1064 nm) maintenance-free, air-cooled Lens: 3,2"; Numerous options • FM Hybrid: Multiwave Technology, Nd:YVO₄ laser (1064 nm) and air-cooled sealed-off CO₂ laser (10600 nm) Lens: 2,85"; Numerous options

www.trotec.net

Linzer Str. 156
A-4600 Wels
Tel. +43 / 72 42 / 239-0
Fax +43 / 72 42 / 239-7380
trotec@trotec.net
www.trotec.net

trotec[®]
laser engraving technology

Laser Systems **FineMarker**



Y125X124000210X1000

Nd:YVO₄ Flatbed Lasers
for finest markings
on metals and plastics

Worldwide Leading Laser Engraving Technology

trotec[®]
laser engraving technology

YAG / YVO₄ technology: More **Power** — More **Possibilities**



Boost your business with the FineMarker from Trotec

Laser marking is already an indispensable technology for many companies in all kinds of industries. It finds new uses every day because of the numerous advantages it provides.

The FineMarker flatbed laser system with Nd:YVO₄ laser source fulfils all the requirements of modern industry. Whether you process individual workpieces or series products, it is the right choice for you.

- Direct marking of metal parts
- Removal of surfaces
- Durable colour change on plastics

Secure your long term investment:

• **Efficiency and flexibility**

The FineMarker is extremely flexible thanks to its large working area. Large single labels or small series parts—the FineMarker completes orders with maximum efficiency over 720 mm x 430 mm (28 x 17”).

• **Productivity**

Trotec laser technology scores with very high throughput and simple handling. The FineMarker can even label several workpieces in one marking process, while service staff turn to other tasks.

• **Great precision and non-contact**

The Nd:YVO₄ FineMarker laser source has a very fine laser beam, which makes the precise engraving of 1-point text possible. Our contact-free mechanisms ensure that expensive and delicate parts are not touched during the marking process and thus remain undamaged. The FineMarker is also used for the creation of micro-scripts for protection against plagiarism.

FineMarker Hybrid

Pure Innovation



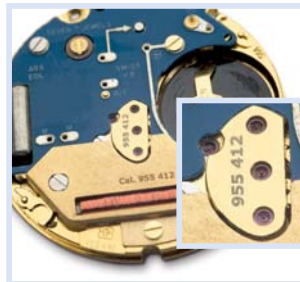
The first laser system to combine CO₂ and Nd:YVO₄ within a single platform

The Trotec FineMarker Hybrid is the world's first flatbed laser system to combine both CO₂ and Nd:YVO₄ technology. This design increases the range of materials and products that can be processed. Engraving, marking and cutting on one laser system.

Our Multiwave Technology™ achieves a level of technological integration that was previously thought impossible.

The FineMarker Hybrid is easy to use, technologically advanced and carries all the Trotec family genes.

What Is Your Application?



Applications

- electronic components
- gifts and promotional objects
- parts for the automotive and aviation industry
- components for medical engineering
- type plates
- printed circuit boards
- metal signs
- jewellery
- tin goods
- trophies
- ... and many more

Materials

- bare metals
- coated metals
- untreated metals
- coated plastics
- solid coloured plastics
- acrylics
- cardboard
- ceramics
- paper
- technical textiles
- wood
- ... and many more

A Complete Package

And a Host of Value Added Accessories



- **Laser pointer:**

The laser pointer indicates exactly where the laser beam will land on the material, ensuring precise positioning and marking.

- **Automatic focus:**

Our built-in automatic focus-capabilities work in concert with the auto-focus features of our JobControl software. A high degree user-friendliness is assured.

- **Ferromagnetic worktable:**

The ferromagnetic worktable of the FineMarker makes positioning of thin materials (e.g. foils) easy.

- **Extra dust protection:**

Provides added protection for delicate parts such as electronic components and motors for work environments that are prone to dust and dirt.

- **Air assist:**

Adding air pressure to the processing head as needed improves suction during operation and additionally provides protection for the lens. The air assist is controlled via the Trotec JobControl software.

- **Rotary attachment:**

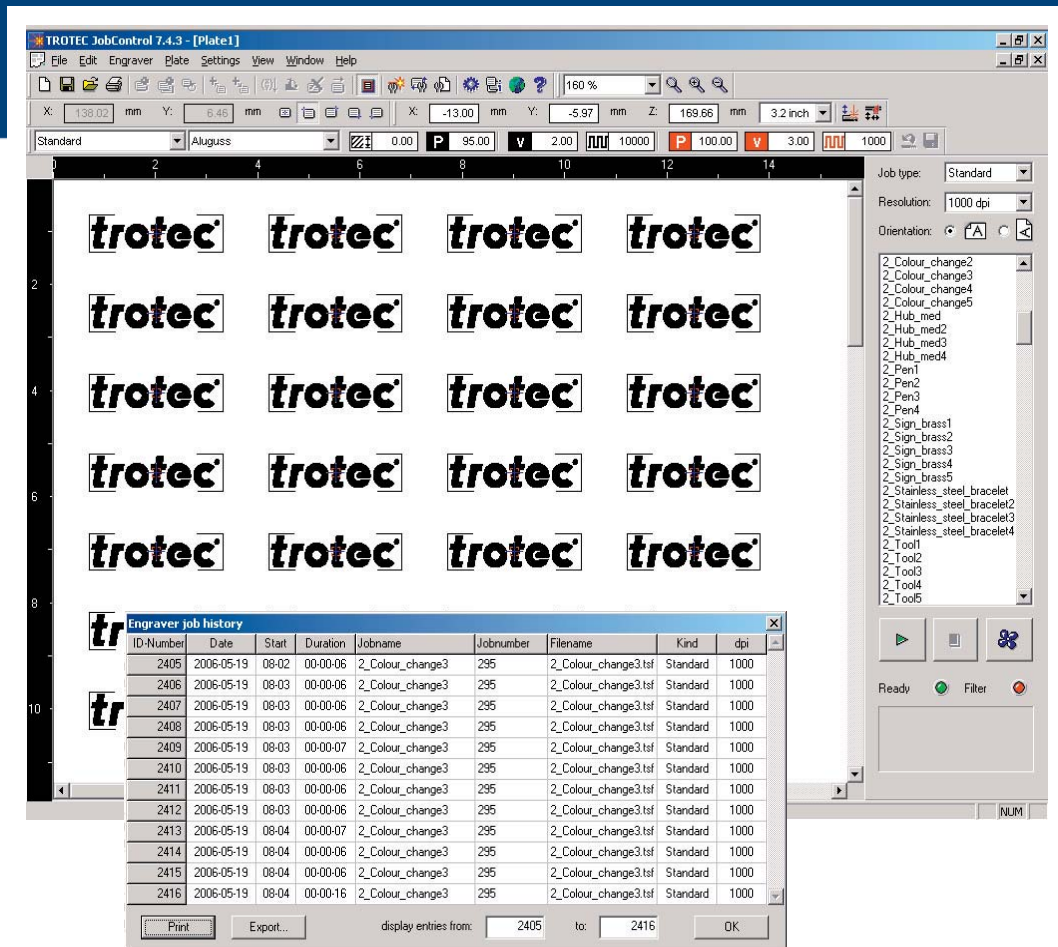
Engrave any cylindrical or similar objects such as goblets. Simply load and unload the product with the help of a spring-mounted tension device, which is easy to install and simple to use. Choose from two types of rotary attachments, depending on the size of your workpiece.

- **Exhaust systems:**

Our exhaust systems take care of the efficient removal of dust and fumes produced during laser operation and ensure the safe and reliable use of your laser for years to come. Another critical factor: you will also be safeguarding the health of your employees and the environment. Trotec offers a wide variety of exhaust systems—from simple ventilators to high-tech filter solutions. Ask your supplier to recommend the ideal extraction system for your application.



Smart Software ... for Tough Jobs



Make your laser system work for you

Trotec's JobControl software package offers an innovative and intuitive solution for managing engraving and marking tasks with your FineMarker. JobControl is an easy-to-use software programme that provides you with total and flexible control over all laser functions. The software technology features an open design—you can use it with any Windows-based application, including AutoCAD, CorelDraw, Photoshop, Word, Excel, Acrobat Reader and many more.

Send your layouts directly to the laser via the JobControl printer driver.

Key features include:

- On-the-fly parameter adjustment—even during processing
- Materials database with predefined materials
- Software-AutoFocus for precise focusing with a mouse click
- Multiple positioning: several parts are marked within one marking sequence
- Marker for precise positioning for the most delicate marking tasks
- Job history to track and schedule customer orders
- Easy replication of all marking and engraving orders
- Remote diagnostics / remote maintenance capabilities

... and many more.

Global Play Local Support



Global presence —now and in the future

Trotec lasers are used all over the world. Our experience in the field with thousands of systems installed is evidence of our **know-how** and **customer trust**.

Our Trotec service and sales partners in more than 80 countries undergo continuous training programmes. Trotec laser systems can therefore be professionally serviced on site.

Trotec Software JobControl also offers the unique possibility of analyzing and evaluating the status of your laser installation. We can provide long distance servicing for rapid diagnosis and high levels of reliability and availability.

For the success of your business—now and in the future.

Our motivation

At Trotec the customer is our top priority. We want you to be even more successful thanks to Trotec. In order to be always able to offer our customers the perfect solution, our aim is innovation. Our innovations provide **minimal overall costs** for your laser system, quality, flexibility, efficiency and **productivity**.

Trotec offers standard and individual solutions. Trotec is the only provider to dispose of a **full range** of innovative flatbed and galvo systems with CO₂, Nd:YVO₄ and fiber laser as well as excimer laser technology.

With intelligent equipment, the know-how of our team and our worldwide service network, we can realize the **ideal solution** for your marking needs at a competitive price.