

Large-Field Laser System

TP 1313



- Cutting
- Engraving
- Marking

Worldwide Leading Laser Engraving Technology

trotec[®]
laser engraving technology

Cutting or engraving? You decide!



Raise your profits with TP1313 from rotec!

- **Cutting, engraving and marking**

Next to cutting, use your laser to engrave delicate pictures or gray scales. With a maximum speed of 60m/minute, the **TP1313** will yield high profitability for your business.

- **Safe and clean operation**

The **TP 1313** has a unique housing design and meets the requirements of laser safety class 2. You will not need a special design to protect your employees, or a laser safety officer. As an added benefit, the self-contained system allows dust to be efficiently evacuated.

- **Easy to use**

The CAD/CAM software **troCam™** is best for obtaining excellent cutting results. Only the **TP 1313** is equipped with a professional CAD/CAM software. Speed up the layout process, and don't worry about import filters.

- **Global presence – now and in the future**

Innovation is our passion, and the customer is our focus here. Your productivity is most important to us.

With our global network of more than 80 rotec distributors and service partners, we can guarantee maximum reliability and availability. All this to support your success – now and in the future.

Your requirements determine **our planning** strategy:



Manufacture of:

- architectural models
- automotive parts
- flexographic plates
- woodwork
- prototypes
- displays
- signs
- textile cutting

- gifts and miscellaneous articles
- templates
- type plates
- certificates
- light signs
- die boards
- key pads
- ... and many more.

All these materials are suitable for processing with the TP1313:

- acrylic
- coated metals (marking)
- anodized aluminum (marking)
- veneer
- fabric
- glass
- rubber
- wood
- cork
- plastics
- leather
- melamine
- nylon
- paper
- cardboard
- polyester
- foam
- silicone
- particle boards
- stone
- synthetics
- compounds
- vinyl
- ... and many more.

Technology:



• Dimensions:	94" x 79" x 51" (2400 x 2000 x 1300 mm)
• Approx. weight:	900 kg
• Max. operating surface:	51" x 51" (1300 x 1300 mm)
• Max. operating height:	5.3" (135 mm)
• Free Width	59" (1500 mm), load from both sides
• Operating speed:	197 ft./min (60 m/min), acceleration 32.8 ft/s ² (10 m/s ²)
• Accuracy:	Settable accuracy: 1.047μm Static repeatable accuracy: <± 15μm
• Mechanical design:	Fully self-contained housing with reinforced safety system Laser Safety Class 2. Solid design optimized with finite elements. Powered by maintenance-free brushless DC servomotors. Variable material support.
• Laser design:	Sealed-off CO ₂ laser, fully maintenance-free, lenses with 2.5" or 5" inches standard delivery All optics are circulated with air for long life.
• Laser power:	25 – 240 Watt. Higher laser power upon request.

Solid Base – Awesome Possibilities.



Options for expanding the system:

- **Gas kit:**

Select between two gases for processing, e.g. O₂ and N₂. By adding gas, the quality of cutting results may be even further improved for specific materials.

- **Exhaust system:**

The exhaust system evacuates dust and vapors created when operating the laser. The exhaust system guarantees an uninterrupted, safe and reliable laser operation for many years to come.

trotec offers a wide variety of exhaust systems – from simple ventilators to high-tech filter systems. Please ask our specialist to find the ideal system for your application.

- **CCD-Camera:**

The CCD-Camera collects reference points in order to control positioning of your laser.

- **Vacuum table:**

If needed, the TP1313 may be equipped with a vacuum table for maximum processing of thin and corrugated materials, e.g. wood veneer. This allows even processing. The material remains stable and can not slide. It is easy to retrofit the equipment at location.

Included in Standard Delivery:

- **Laser pointer:**

The laser pointer shows the laser's position, which makes it easier for you to correctly position the material prior to processing.

- **Lenses:**

The TP1313 has a 2.5" high-resolution and a 5.0" lens.

Select the best optics for your application – without additional cost.

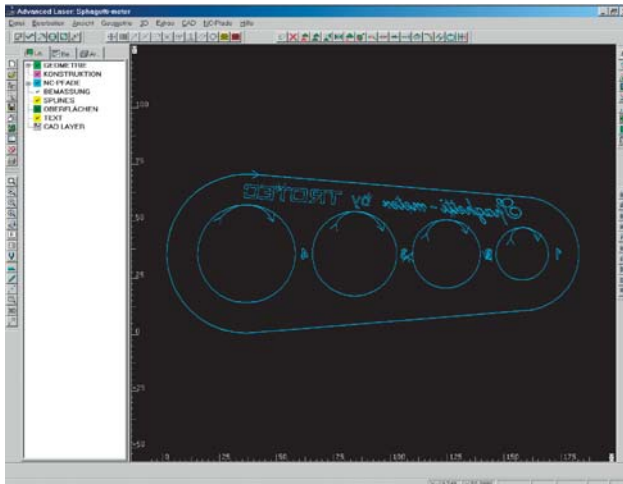
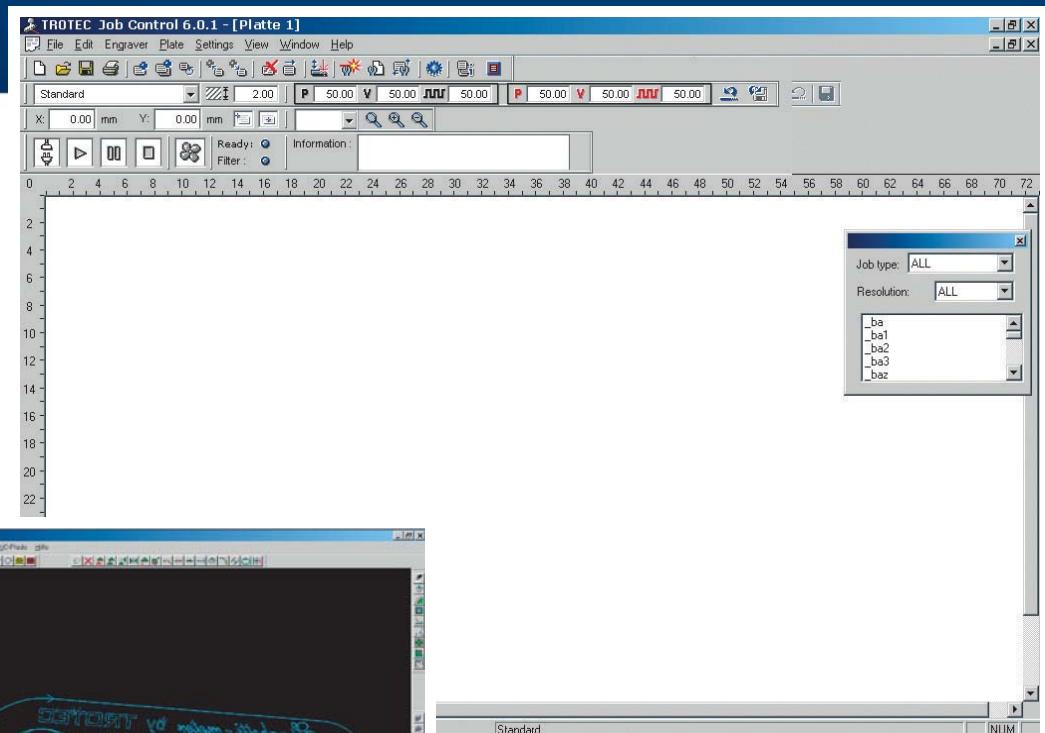


- **Software AD-Logic® and troCam™**

The TP1313 is equipped with standard software and the professional CAD/CAM software: **AD-Logic®**, the perfect driver-software and **troCam™**, a CAD/CAM software, which is suitable for the data formats you may want to import. Please make the software selection for your specific application.



Smart Software for Sophisticated Applications



Trotec provides choice and flexibility when selecting your software for laser operation. Select **troCam™**, a professional CAD/CAM software and **AD-Logic®**, an innovative solution for project management.

An added benefit: you are not limited in your choice. Use **troCam™** for cutting tasks today, and **AD-Logic®** for engraving tomorrow.

AD-Logic®

- Change parameters even during operation
- Material database for pre-defined materials
- Precise positioning with markers
- Job history for calculating customer orders with absolute accuracy
- Easily repeat all cutting and engraving orders
- Telediagnostic services and remote assistance

troCam™

- Professional CAD/CAM software including module for all cutting processes
- Laser operation with postprocessor
- Different start and stop paths for perfect cutting lines
- Nesting module for automatic or manual nesting to best save material
- Preview process sequencing
- Different selections for cutting lines (center, internal, external, change, etc.)
- Correction of cutting width for exact part dimensions

Global Play – Local Support.



Trotec Laser are being used worldwide in over 90 countries. We have in the field experience with more than 1,500 systems. This clearly underscores our technical know-how and shows that our customers trust us.

Our **trotec service partners** in over 80 countries are being trained on a continuous basis. This is why the trotec laser systems can be professionally serviced at location.



In addition, the **AD-Logic®** software incorporates the unique feature laser system evaluation. This means fast diagnostics and remote service in real time.

Checklist for purchasing your laser system:

- **Does the laser have a self-contained safety system?**
Please consider the additional cost for training laser safety specialists and special installation requirements to protect operators.
The TP1313 has everything! This means: no added cost to you.
- **Is the laser suitable for cutting and engraving?**
The TP1313 can do both! For you this means: other lucrative business areas. Here, trotec systems are a perfect match.
- **Does standard delivery include a professional CAD/CAM software?**
Please consider the added cost of software and the required internal tests you will need to conduct to determine compatibility.
The TP1313 has it! For you this means: saved money, time, and extra stress.
- **How much experience does the laser system supplier have?**
The quality of laser systems is usually revealed when they have been operating intensively for some time.
trotec can do it! For you this means: you will benefit from know-how and experience gained from more than 1,500 installed systems.
- **What happens if something goes wrong? Is a service partner readily available?**
trotec has the service you desire! For you this means: remote service via our network of 80 service partners worldwide to guarantee immediate support.

www.troteclaser.com

Linzer Str. 156
A-4600 Wels
Tel. +43 / 72 42 / 239-0
Fax +43 / 72 42 / 239-7380
trotec@at.trotec.net
www.troteclaser.com

trotec[®]
laser engraving technology