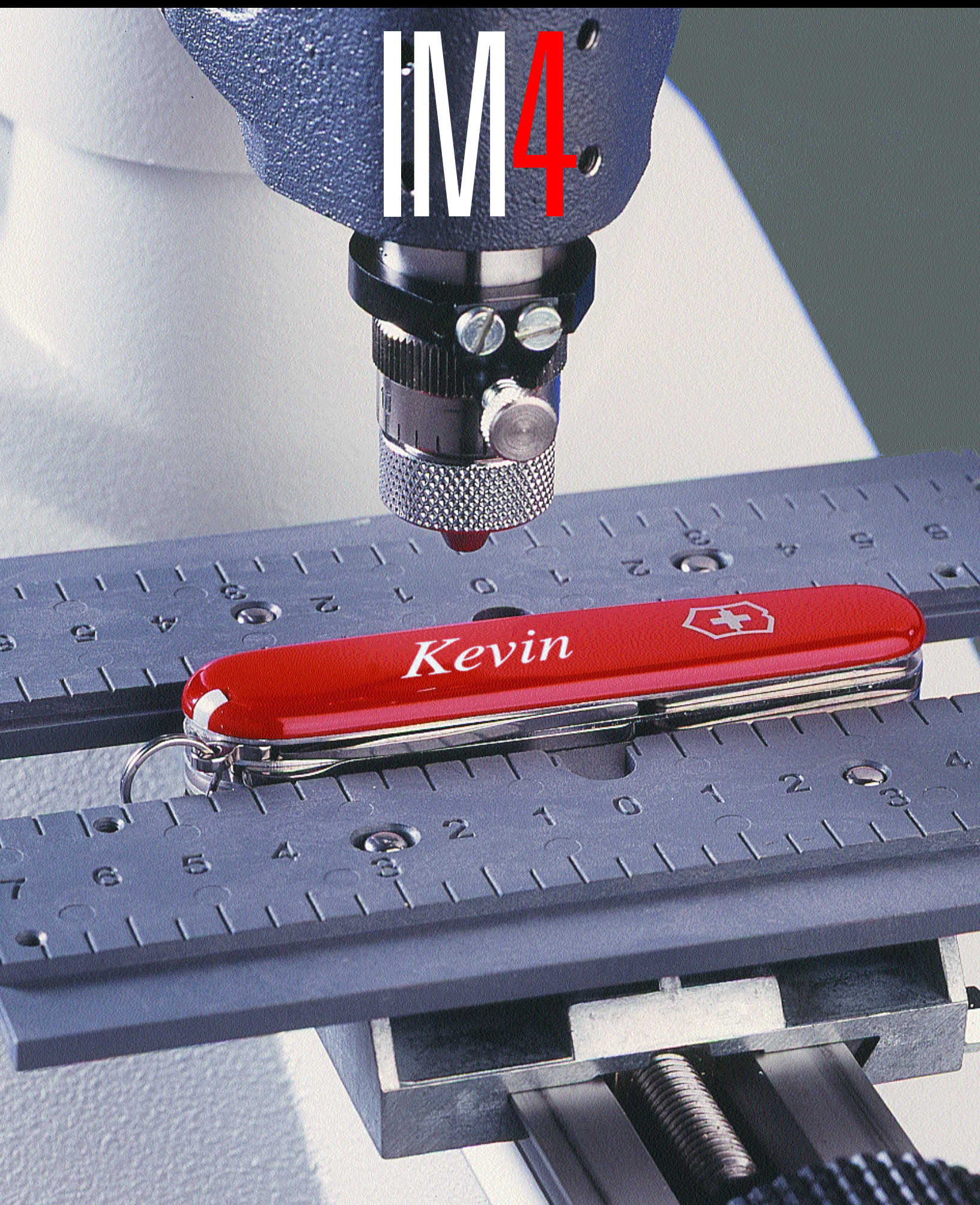


e n g r a v i n g m a c h i n e

IM4

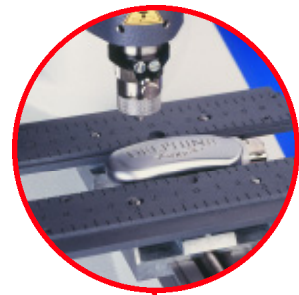


IM4

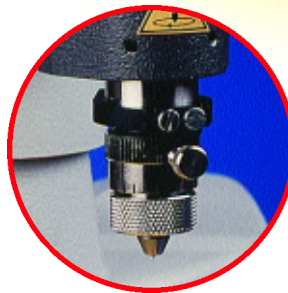
- An affordable marking system that's convenient, easy-to-operate and can replace your manual machine or the need to outsource your marking tasks.
- Compact and quiet...can easily be set up in your shop, office or retail establishment.
- Complete system includes engraving machine and software, tools, accessories and tutorial.
- Choose from two user-friendly softwares, that includes fonts, ornaments and symbols that will enhance your creativity.
- Easy clamping of plates and other objects with self-centering vice.
- Depth nose allows for constant engraving, particularly on uneven surfaces.
- Open access to the object to be engraved.
- Footprint of only 20 x 10.25" (505 x 260 mm)
- Engraving area: 4.72 x 3.15 in (120 x 80 mm)



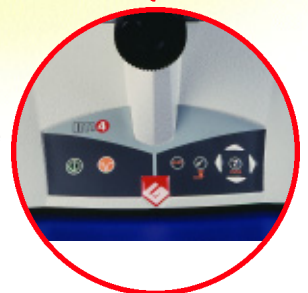
Choose from two user-friendly softwares.



Self-centering vice for easy clamping of objects.



Depth nose allows for constant engraving, particularly on uneven surfaces



Easy-to-operate engraving controls.

IDEAL FOR:

- Watches • Bracelets • ID Badges
- Small Signs • Gift Items • Industrial Tags
- Identification and Legend Plates

